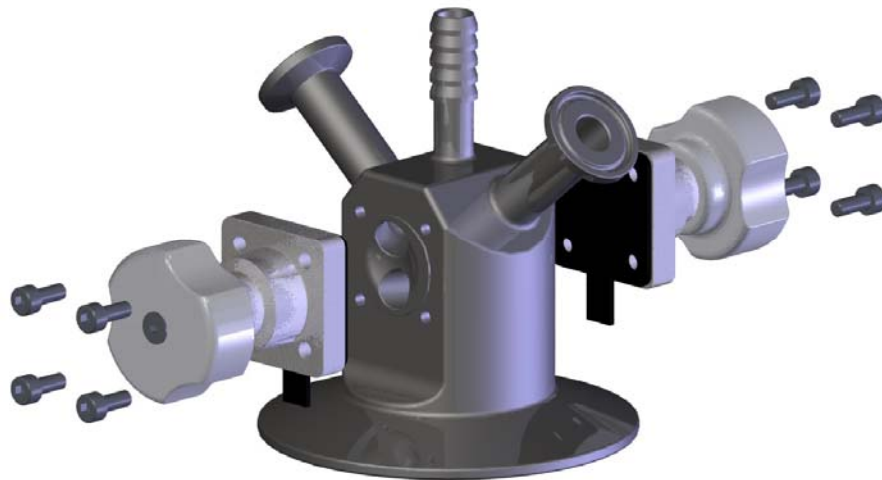
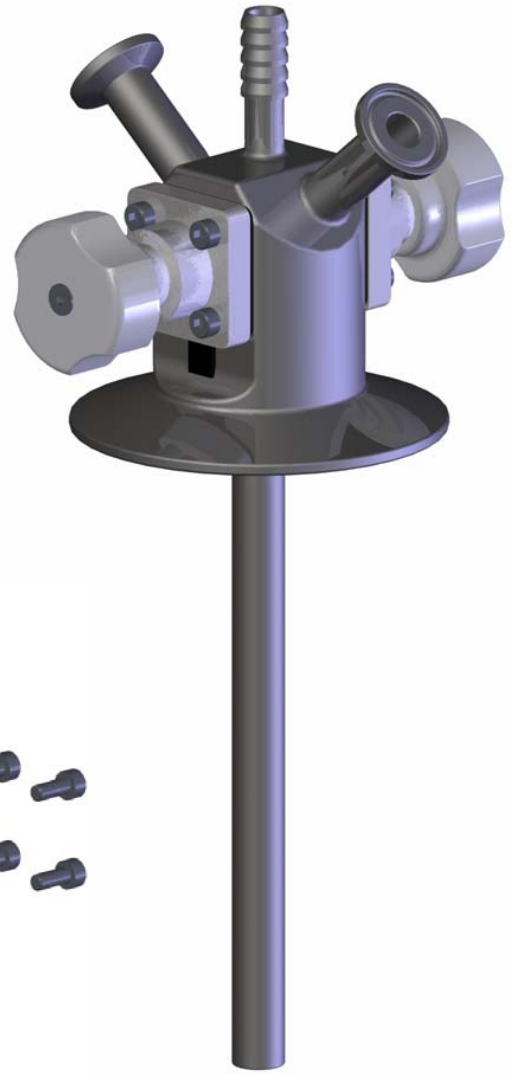


BioWorks!

DBV – Dual Bio-Valve

Valve Assemblies for use with small can and bottle containers in biotech and pharmaceutical applications where sterility, drainability and cleanliness is important. Internal holes are sloped to ensure complete drainage. Most common assembly (as shown) combines the inlet and outlet valves, a dip tube and a vent with an integral clamp connector flange and the welded hose barb and tube connectors. This compact design provides a complete assembly in one machined body versus a welded valve complex. Ideal for tight fits like into the top skirt on smaller cans. Single body reduces welds and improves durability.



Exploded view

Metal is 316L with EPDM or Silicone Gasket. Body is suitable for standard diaphragm valves. Valve assembly has a 12 Ra electropolish. Currently available in 1, 1 ½", 2, 2 ½" and 3" TC body with Other sizes and configurations available upon request.

Contact BioWorks! for more information.

Innovative Devices for Biotechnology