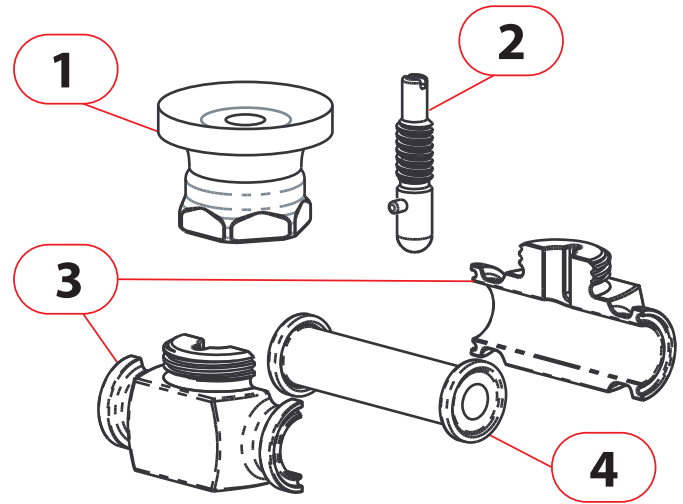


BTV: Bio Tube Valve

Service Manual

BTV Parts:

- 1: Handle (PEI & 316L SS or 464)
- 2: Valve Stem (316L SS)
- 3: Valve Body (316L SS)
- 4: BTV Seal (Silicone)



Disassembly Procedure: Start with the valve near completely open. The valve is held together by the collar that also retains the handle (1). As you unscrew the collar from the valve body you must also turn the handle in the opposite direction at the same rate. If you fail to turn the handle clockwise as the collar is being unscrewed (counter-clockwise) you will inflict permanent damage to the handle assembly via the anti-rotation pin on the valve stem (2). Unscrew the valve stem from the handle assembly.

Reassembly: Inspect all threads for damage and debris. Clean as needed. Split the valve body (3) and dispose of old seal (4). Install new seal gently to ensure that the integrated O-rings seat properly in the valve body.



Place the valve stem into the body as shown. Screw the handle onto the stem taking care to not let the valve stem come out of the body. Take note of the alignment slot on the valve stem that should run parallel to the seal.

Once the collar has reached the valve body threads hold the handle still with one hand and rotate the collar onto the valve body threads. As you start to screw the collar onto the valve body you will have to turn the handle in the opposite direction to prevent the valve from closing. Tighten until the collar touches the valve body. It is recommended to re-tighten the collar after installation as well.

